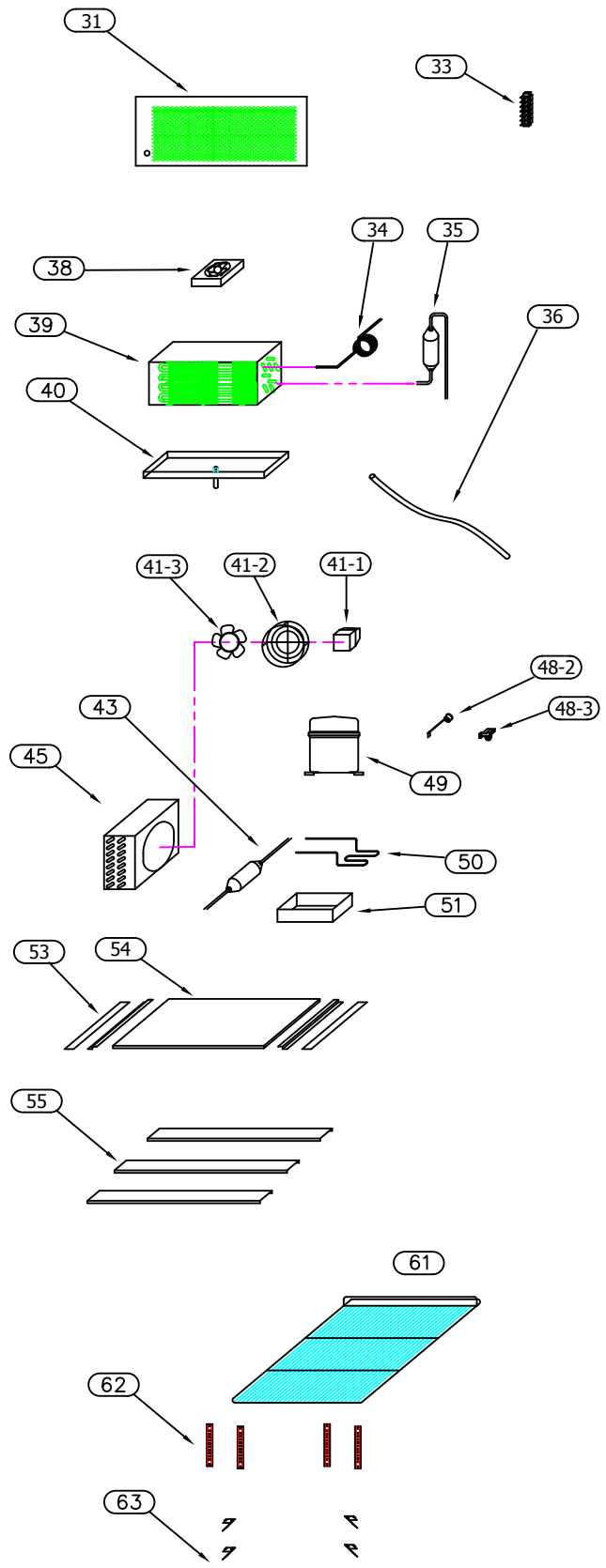
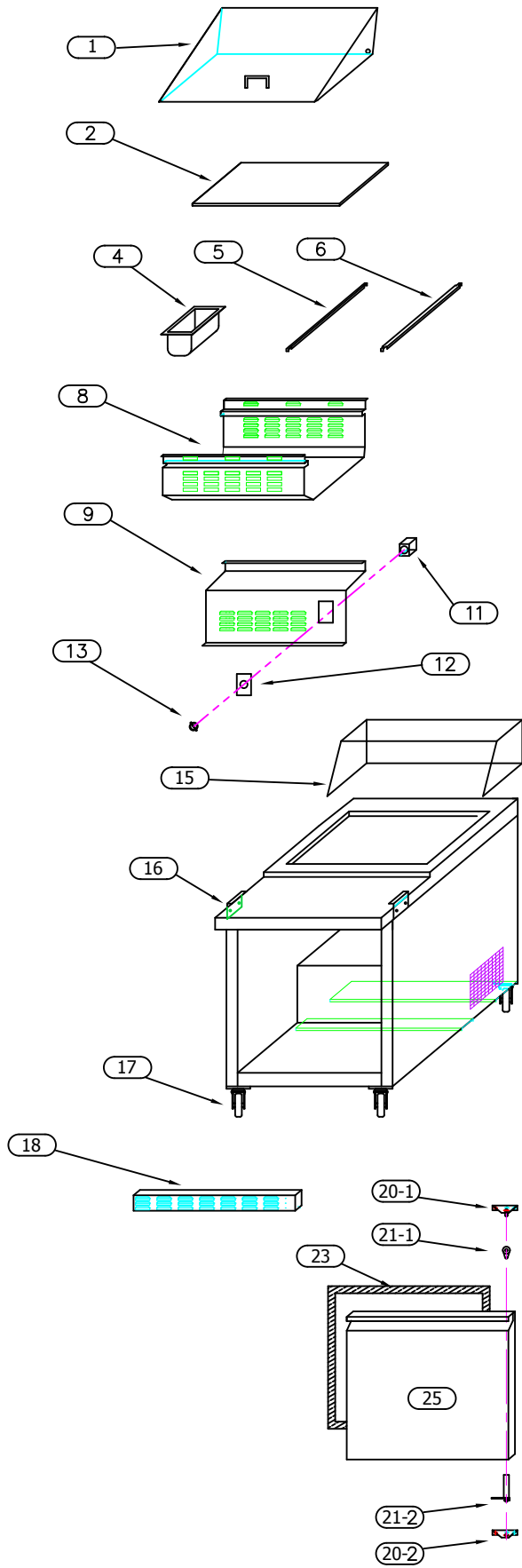


CABINET ASSEMBLY

MODEL: JSP-2708



CABINET ASSEMBLY LIST

MODEL: JSP-2708

09/08

No.	Q'ty	Part No. (Use when ordering)		Description	List Price
1	1	459	4128	Top panel, JSP-2708, JSP-7218, 22.5" wide (condiment lid)	\$300.00
2	1	459	4020	Cutting board, 1/2" x 12" x 27.25"	\$75.00
4	6	459	5801	Food pan, polycarbonate, 1/6 size, 4" deep, clear	\$15.00
4	2	459	5802	Food pan, polycarbonate, 1/9 size, 4" deep, clear	\$15.00
5	2	459	5811	Pan divider, .5" wide, fits on edges only, JSP units, each	\$8.00
6	3	459	5812	Pan divider, 1" wide, middle, JSP units, each	\$8.00
8	1	459	5701	Panel, food catch, below pans, JSP-2708	\$150.00
9	1	459	1509	Coil cover, Ascend 27" prep units, inside back panel	\$150.00
11	1	459	7201	Temperature controller, t-stat, Ranco	\$90.00
12	1	459	7402	Temperature control (t-stat) metal cover	\$15.00
13	1	459	7401	Temperature control (t-stat) knob	\$10.00
15	1	459	4519	Hood, JSP-2708, JSP-7218 unit, 22.5" wide	\$200.00
16	2	459	4015	Bracket, holds cutting board, all preps	\$7.00
17	2	459	4801	Caster, 5", stem, no lock	\$25.00
17	2	459	4802	Caster, 5", stem, with lock	\$30.00
18	1	459	4505	Front bottom vent grill, 27"	\$100.00
20-1	1	459	4301	Hinge, prep & u/c, top right hinge, Ascend units	\$20.00
20-2	1	459	4303	Hinge, prep & u/c, bottom right hinge, Ascend units	\$20.00
21-1	1	459	4121	Plastic / nylon circular bushing insert, top of door	\$5.00
21-2	1	459	4400	Tensioner, bottom of door, prep & u/c	\$38.00
23	1	459	4200	Door gasket, Ascend 27" & 60" preps & u/c	\$60.00
25	1	459	4113	Door, 27 and 60" wide models, right hinge	\$200.00
31	1	459	4514	Bottom back mesh cover, Ascend 27" preps & u/c	\$100.00
33	1	459	6302	Power supply terminal block, 600V, 30A, 4 circuit	\$30.00
34	1	459	3505	Cap tube. 0.031 ID, 31 in.	\$18.00
35	1	459	1701	Accumulator, copper, evap coil	\$25.00
36	1	459	2501	Evaporator drain pan tube, flexible plastic	\$15.00
38	1	459	1204	Evaporator fan motor w/blade, 115V	\$142.00
38		459	1210	Evaporator fan motor w/blade, NMB 120V/1PH/14W	\$142.00
39	1	459	1112	Evaporator coil, Ascend 27" prep & u/c, 5d x 16.25w (4/4)	\$180.00
40	1	459	1601	Drain pan, evaporator, Ascend 27" prep & u/c	\$50.00
41-1	1	459	2207	Condenser fan motor, 115V	\$90.00
41-2	1	459	2302	Condenser fan blade cover / guard, 9" dia.	\$20.00
41-3	1	459	2401	Condenser fan blade, 5B, 7.75" diameter	\$20.00
43	1	459	3601	Filter drier, copper spun	\$20.00
45	1	459	2107	Condenser coil, Ascend 27" prep & u/c, 9x2.75x8 (6x3)	\$200.00
48-2	1	908	3401	Overload for AEA-3425YXA, 1/5 HP	\$40.00
48-3	1	903	3201	Relay for AEA3425YXA, 1/5 HP	\$30.00
49	1	903	3101	Compressor Tecumseh, 1/5 HP R-134a, 03/06	\$300.00
50				Condensate pan, w/ hot gas loop, Ascend 27" prep units	

CABINET ASSEMBLY LIST**MODEL: JSP-2708****09/08**

No.	Q'ty	Part No. (Use when ordering)	Description	List Price
53	2	459 4320	System deck rail, left or right, Ascend prep & u/c	\$15.00
54	1	459 4322	Deck, system, Ascend 27" prep & u/c	\$30.00
55	3	459 4316	Cabinet support, Ascend 27" prep & u/c	\$40.00
61	1	459 5210	Vinyl coated wire shelf, Ascend 27" prep & u/c, 22.75" x 17.25"	\$60.00
62	4	459 5104	Pilaster, Ascend prep & u/c	\$15.00
63	4	459 5303	Shelf clip (each)	\$5.00