

PROJECT _____

QTY. _____ ITEM NO _____



Reaching New Heights

Date Modified 9/24/08

Three Door Sandwich Preparation Unit



JSP-7218
72.0" wide, 18 cu.ft.

Stainless steel interior & exterior standard!
Front breathing!
The most durable condiment lid in the industry!

STANDARD FEATURES:

- Front Breathing
- Thermostatic Control
- Stainless Steel Catch Tray under pans
- CFC-free R-134a Refrigerant
- 3 Vinyl-Coated Wire Shelf
- 5" Casters Included
- Reinforced Door Hinges
- Fully Coved Interior Corners
- Self-Contained Rear Mounted Refrigeration System
- 2.5" Thick Foamed-in-place Polyurethane Insulation
- Fully-Recessed Door Handles
- Automatic Door Closure with 90° Hold Open Feature
- Evaporative Hot Gas Condensate Pan
- Snap-In Magnetic Door Gasket
- Assembled in USA

MATERIALS:

INTERIOR: Stainless steel interior walls, floor, and ceiling.
Vinyl-coated wire shelves.

EXTERIOR: Stainless steel worktop.
Stainless steel sides and doors.



ISO 17025:2005 Certified

DIMENSIONAL DATA

Model No.	L	D	H	Cu.Ft.	Lids	Pans	H/P	Volt	Amp.	NEMA	Shipping Wt.
JSP-7218	72.0"	29.5"	42.7"	18	2	18	1/2	115/60/1	9.1	5-15P	460



Sandwich Prep Unit JSP-7218

Description: Three solid door sandwich prep unit, 18 cu. ft

Features & Benefits

Stainless steel interior and exterior for greater durability, construction and appearance.

Self-contained **rear-mounted refrigeration** with high humidity coated fin coil evaporator.

- Holds 33° F to 41° F for refrigerator

2.5" thick, foamed-in-place polyurethane high density insulation.

18 poly-carbonate, 1/6 size pans.

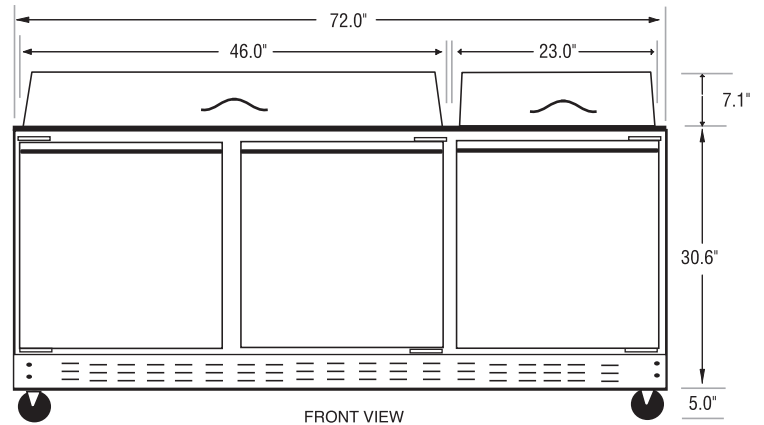
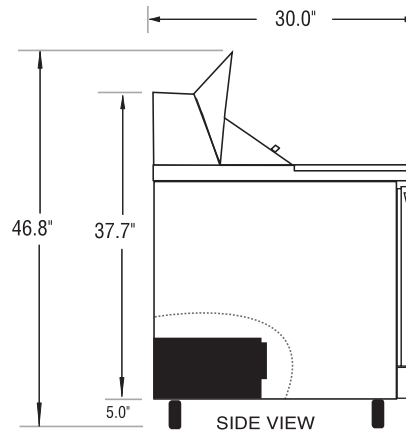
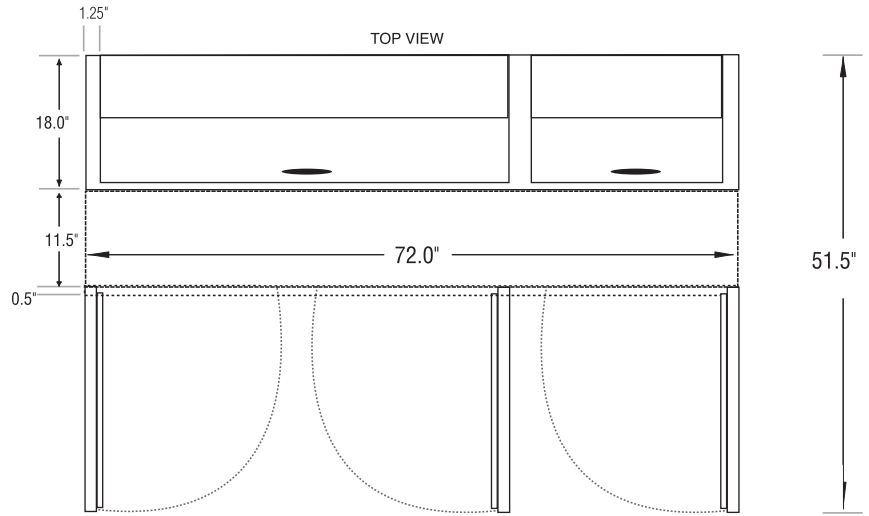
5" casters included- for easy mobility and installation.

Twelve inch full length removable cutting board.

Stainless steel top.

Reinforced hinges and self-closing doors with 90 degree hold-open feature and fully-recessed handles.

Hot gas evaporative condensate pan - no floor drain required!



PAN CONFIGURATION



NEMA 5-15P plug
5-15R receptacle required

General Information

Cubic Ft.: 18

Shelf Size: 17.5" x 22.9"

Pans: 18

#Lids: 2

Exterior: Stainless

Unit Weight: 420 lbs.

Interior: Stainless

Ship Weight: 460 lbs.

Technical Data

Refrigerant: R-134a

Volts: 115

Start Amps: 12.6

#Compressors: 1

Run Amps: 9.1

Cord Length: 82 in.

Horsepower: 1/2

SPECIFICATIONS SUBJECT TO CHANGE WITHOUT NOTICE