



REACHING NEW HEIGHTS

1575 Zephyr Avenue  
Hayward, CA 94544  
Phone: (510) 477-3400  
Fax: (510) 477-3412  
www.ascendmfg.com  
info@ascendmfg.com

© 2011 ASCEND is a registered trademark of Jimex Corporation

Date Modified 1/11/2012

# ACC-50 ASCEND Cup Chiller

PROJECT \_\_\_\_\_

QTY. \_\_\_\_ ITEM NO. \_\_\_\_\_

## Standard Features

- 2 Year Parts & Labor Warranty
- 5 Year Compressor Warranty
- Breathes from the front, back, and side
- Capillary tube
- CFC-free R-404a Refrigerant
- Forced Air Refrigeration
- Thermostatic Control
- Stainless steel interior bottom
- Self-contained side-mounted refrigeration with high humidity coated fin coil evaporator
- Holds 0° F to 20° F
- 2.5" thick foamed-in-place polyurethane high density insulation
- Stainless steel lids and reinforced countertop
- Adjustable bullet feet for extra height requirements
- Laminated matte black exterior for extra durability
- Lid (door) locks standard
- Includes 3 vinyl coated wire shelves
- Hot gas condensate pan – no floor drain required
- Assembled in the USA

## Materials

- INTERIOR: Stainless steel interior bottom  
Galvanized powder coated steel walls
- EXTERIOR: Stainless steel countertop and lids  
Galvanized laminated black finish



NSF/ANSI Standard 7



C US

## GENERAL INFORMATION

Dimensions (inches): 50.0" (W) x 26.5" (D) x 33.0" (H)

Lids: 2

Shelves: 3

Unit Weight (lbs): 240

Ship Weight (lbs): 270

Cubic Feet: 12

Shelf Sizes: 18.0" x 28.5", 16.25" x 18.0"

Cord Length (inches): 104

## TECHNICAL DATA

Refrigerant: R-404A

Start Amps: 8.9

Run Amps: 6.9

Horsepower: 1/2

Volts: 115

No. of Compressors: 1

# ACC-50 ASCEND Cup Chiller

- 2 Year Parts & Labor Warranty
- 5 Year Compressor Warranty
- Assembled in the USA



REACHING NEW HEIGHTS

1575 Zephyr Avenue  
Hayward, CA 94544  
Phone: (510) 477-3400  
Fax: (510) 477-3412  
www.ascendmfg.com  
info@ascendmfg.com

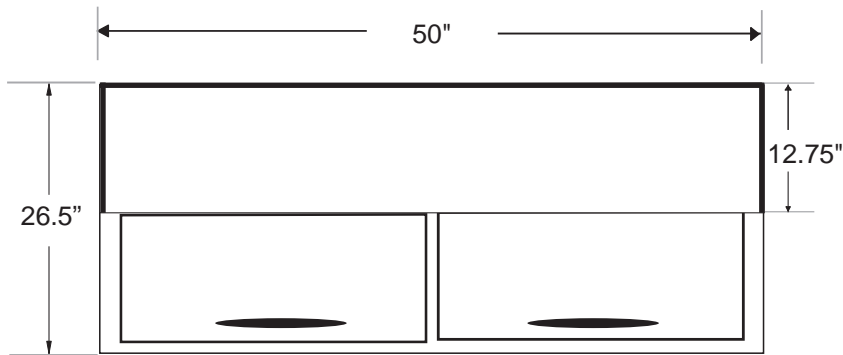
© 2011 ASCEND is a registered trademark of Jimex Corporation

## DIMENSIONAL INFORMATION

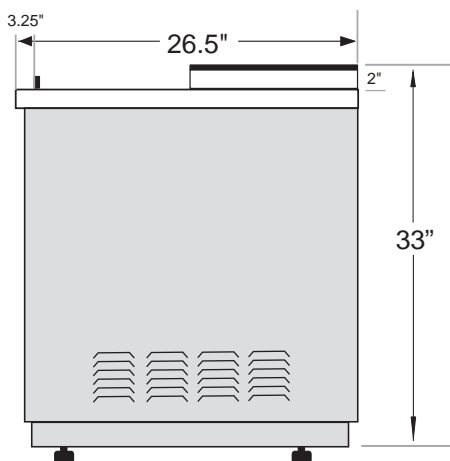
## ELECTRICAL PLUG



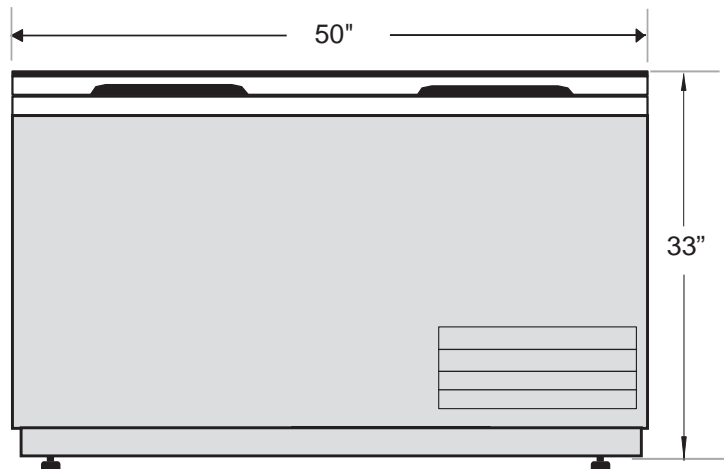
NEMA 5-15P plug  
5-15R receptacle  
required



TOP VIEW



SIDE VIEW



FRONT VIEW